

# ENOTA PARK EXPANSION

November 2023



# MASTER PLAN

## LEGEND

- ① EXISTING STREAM
- ② EXISTING CANOPY TREES
- ③ "THE GREEN"
- ④ WESTSIDE TRAIL
- ⑤ PICNIC AREA
- ⑥ ON-STREET PARKING
- ⑦ ROOT BRIDGING
- ⑧ BOARDWALK
- ⑨ PARK ENTRY
- ⑩ PAVILION
- ⑪ MAINTENANCE ACCESS
- ⑫ STAIRS
- ⑬ TRAIL WITH OVERLOOK
- ⑭ PASSIVE GARDEN
- ⑮ PLAZA AT GREENWICH-ENOTA
- ⑯ BIORETENTION
- ⑰ BUFFER LANDSCAPING
- ⑱ PLAY STRUCTURE/FOCAL POINT
- ⑲ SPRAYGROUND PLAZA
- ⑳ RESTROOM
- ㉑ HALF-COURT BASKETBALL
- ㉒ TERRACED SEATING
- ㉓ ENTRY PLAZA - LUCILE AVE.
- ㉔ SCULPTURE
- ㉕ STREAM BANK RESTORATION
- ㉖ HARD SURFACE TRAILS
- ㉗ MULTIPURPOSE PLAY FIELD
- ㉘ PARKS MAINTENANCE BUILDING
- ㉙ PERVIOUS PAVING
- ㉚ ACCESS RAMP
- ㉛ SOLAR-POWER SHADE STRUCTURE
- ㉜ SHADE STRUCTURE



# SOUTH END-LUCILE

## LEGEND

- ① EXISTING STREAM
- ② EXISTING CANOPY TREES
- ③ "THE GREEN"
- ④ WESTSIDE TRAIL
- ⑤ PICNIC AREA
- ⑥ ON-STREET PARKING
- ⑦ ROOT BRIDGING
- ⑧ BOARDWALK
- ⑨ PARK ENTRY
- ⑩ PAVILION
- ⑪ MAINTENANCE ACCESS
- ⑫ STAIRS
- ⑬ TRAIL WITH OVERLOOK
- ⑭ PASSIVE GARDEN
- ⑮ PLAZA AT GREENWICH-ENOTA
- ⑯ BIORETENTION
- ⑰ BUFFER LANDSCAPING
- ⑱ PLAY STRUCTURE/FOCAL POINT
- ⑲ SPRAYGROUND PLAZA
- ⑳ RESTROOM
- ㉑ HALF-COURT BASKETBALL
- ㉒ TERRACED SEATING
- ㉓ ENTRY PLAZA- LUCILE AVE.
- ㉔ SCULPTURE
- ㉕ STREAM BANK RESTORATION
- ㉖ HARD SURFACE TRAILS
- ㉗ MULTIPURPOSE PLAY FIELD
- ㉘ PARKS MAINTENANCE BUILDING
- ㉙ PERVIOUS PAVING
- ㉚ ACCESS RAMP
- ㉛ SOLAR-POWER SHADE STRUCTURE
- ㉜ SHADE STRUCTURE



SOUTH END-LUCILE



Looking north across the activity lawn



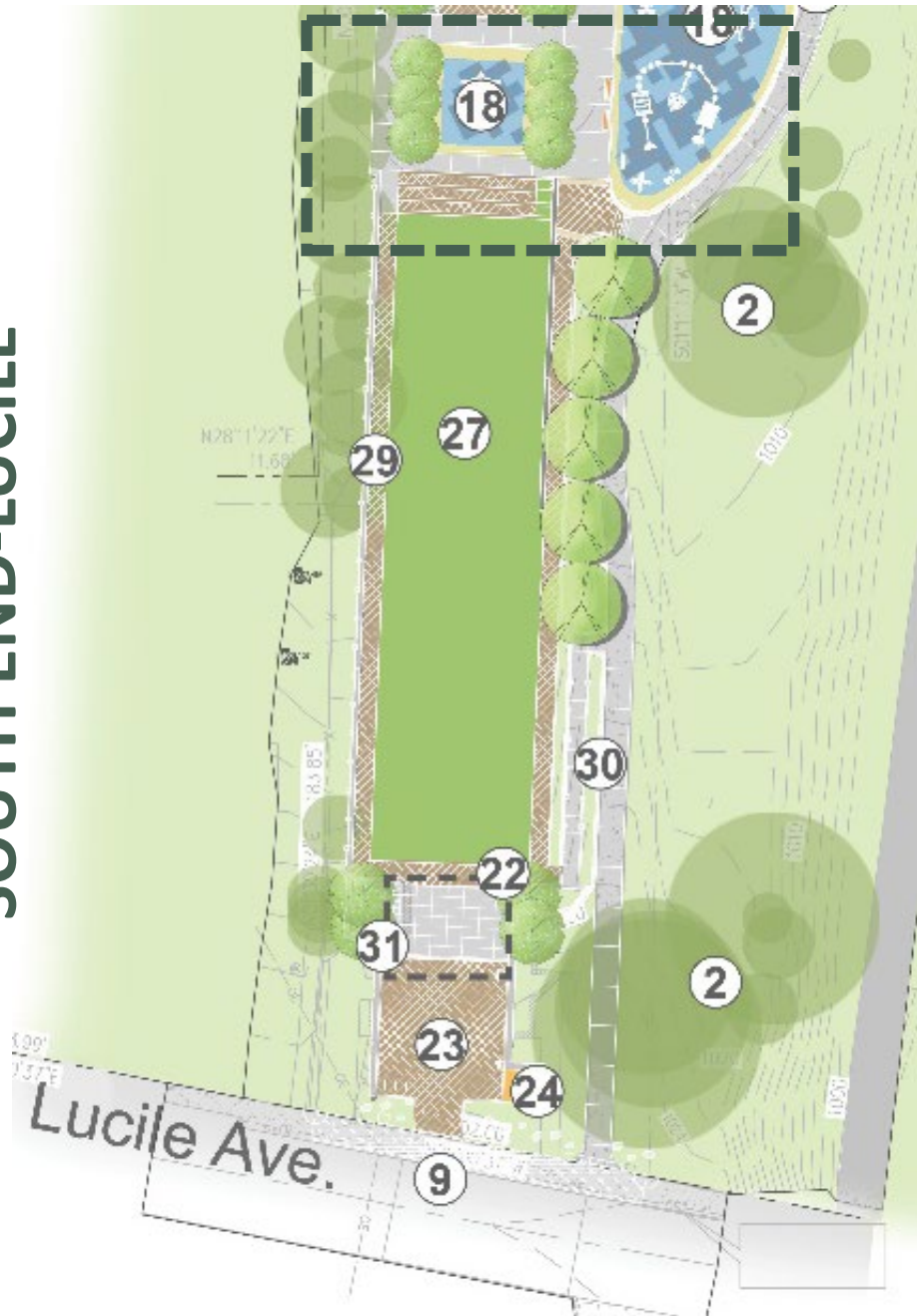
**SOUTH END-LUCILE**



**Solar canopy terraces south-end of activity lawn**



**SOUTH END-LUCILE**



**North end of activity lawn view to playgrounds**



**SOUTH END-LUCILE**



**Basketball court, restroom building, landscape**



**SOUTH END-LUCILE**



**Splashpad and restroom view**





**SOUTH END-LUCILE**



**Art plaza between park and BeltLine trail**



# MID SITE-ENOTA



# MID SITE-ENOTA



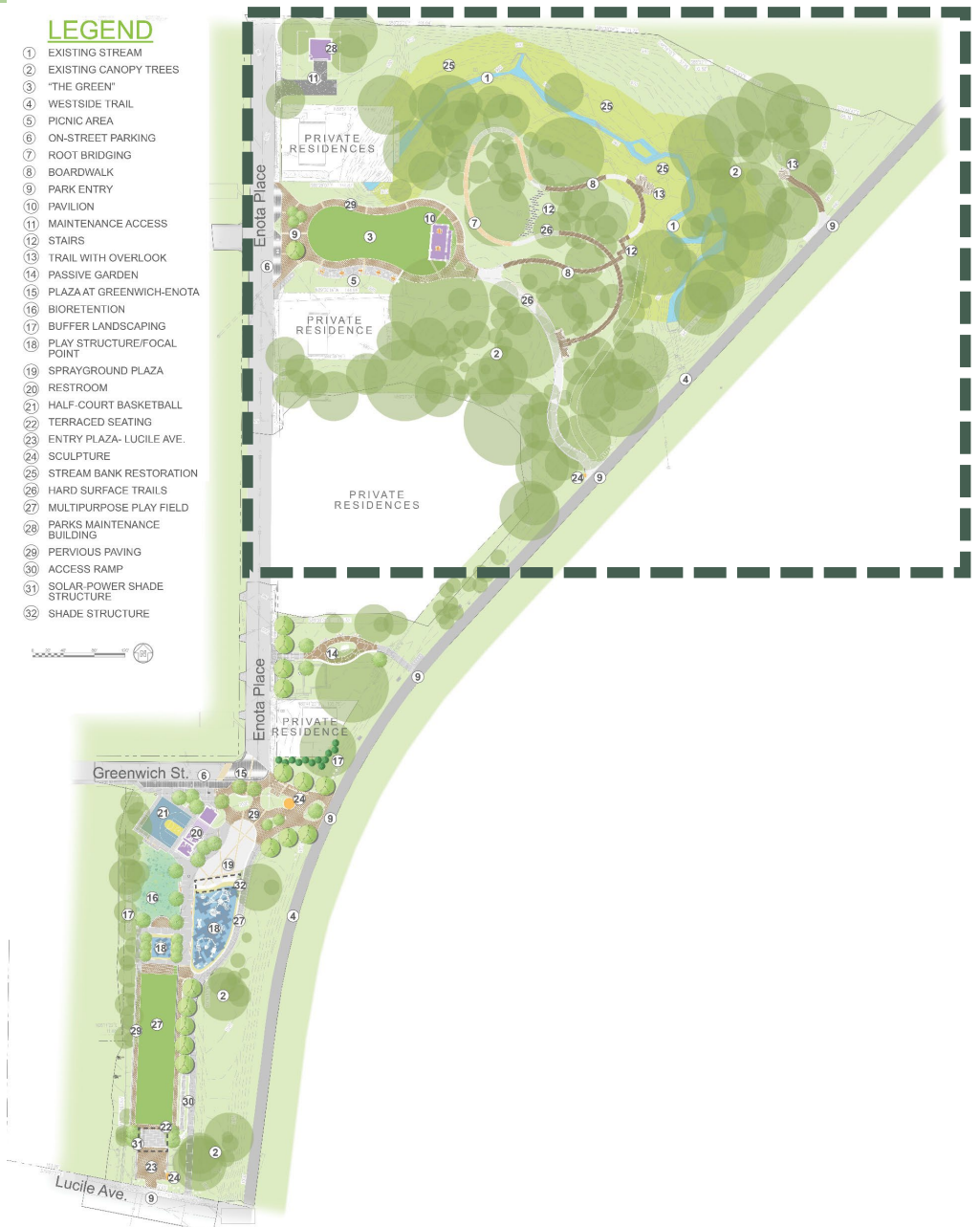
Quiet garden



# NORTH END

## LEGEND

- ① EXISTING STREAM
- ② EXISTING CANOPY TREES
- ③ "THE GREEN"
- ④ WESTSIDE TRAIL
- ⑤ PICNIC AREA
- ⑥ ON-STREET PARKING
- ⑦ ROOT BRIDGING
- ⑧ BOARDWALK
- ⑨ PARK ENTRY
- ⑩ PAVILION
- ⑪ MAINTENANCE ACCESS
- ⑫ STAIRS
- ⑬ TRAIL WITH OVERLOOK
- ⑭ PASSIVE GARDEN
- ⑮ PLAZA AT GREENWICH-ENOTA
- ⑯ BIORETENTION
- ⑰ BUFFER LANDSCAPING
- ⑱ PLAY STRUCTURE/FOCAL POINT
- ⑲ SPRAYGROUND PLAZA
- ⑳ RESTROOM
- ㉑ HALF-COURT BASKETBALL
- ㉒ TERRACED SEATING
- ㉓ ENTRY PLAZA- LUCILE AVE.
- ㉔ SCULPTURE
- ㉕ STREAM BANK RESTORATION
- ㉖ HARD SURFACE TRAILS
- ㉗ MULTIPURPOSE PLAY FIELD
- ㉘ PARKS MAINTENANCE BUILDING
- ㉙ PERVIOUS PAVING
- ㉚ ACCESS RAMP
- ㉛ SOLAR-POWER SHADE STRUCTURE
- ㉜ SHADE STRUCTURE



NORTH END

LEGEND

- ① EXISTING STREAM
- ② EXISTING CANOPY TREES
- ③ "THE GREEN"
- ④ WESTSIDE TRAIL
- ⑤ PICNIC AREA
- ⑥ ON-STREET PARKING
- ⑦ ROOT BRIDGING
- ⑧ BOARDWALK
- ⑨ PARK ENTRY
- ⑩ PAVILION
- ⑪ MAINTENANCE ACCESS
- ⑫ STAIRS
- ⑬ TRAIL WITH OVERLOOK
- ⑭ PASSIVE GARDEN
- ⑮ PLAZA AT GREENWICH-ENOTA
- ⑯ BIORETENTION
- ⑰ BUFFER LANDSCAPING
- ⑱ PLAY STRUCTURE/FOCAL POINT
- ⑲ SPRAYGROUND PLAZA
- ⑳ RESTROOM
- ㉑ HALF-COURT BASKETBALL
- ㉒ TERRACED SEATING
- ㉓ ENTRY PLAZA- LUCILE AVE.
- ㉔ SCULPTURE
- ㉕ STREAM BANK RESTORATION
- ㉖ HARD SURFACE TRAILS
- ㉗ MULTIPURPOSE PLAY FIELD
- ㉘ PARKS MAINTENANCE BUILDING
- ㉙ PERVIOUS PAVING
- ㉚ ACCESS RAMP
- ㉛ SOLAR-POWER SHADE STRUCTURE
- ㉜ SHADE STRUCTURE



View northeast from Enota Place across "The Green"



# NORTH END

## LEGEND

- ① EXISTING STREAM
- ② EXISTING CANOPY TREES
- ③ "THE GREEN"
- ④ WESTSIDE TRAIL
- ⑤ PICNIC AREA
- ⑥ ON-STREET PARKING
- ⑦ ROOT BRIDGING
- ⑧ BOARDWALK
- ⑨ PARK ENTRY
- ⑩ PAVILION
- ⑪ MAINTENANCE ACCESS
- ⑫ STAIRS
- ⑬ TRAIL WITH OVERLOOK
- ⑭ PASSIVE GARDEN
- ⑮ PLAZA AT GREENWICH-ENOTA
- ⑯ BIORETENTION
- ⑰ BUFFER LANDSCAPING
- ⑱ PLAY STRUCTURE/FOCAL POINT
- ⑲ SPRAYGROUND PLAZA
- ⑳ RESTROOM
- ㉑ HALF-COURT BASKETBALL
- ㉒ TERRACED SEATING
- ㉓ ENTRY PLAZA- LUCILE AVE.
- ㉔ SCULPTURE
- ㉕ STREAM BANK RESTORATION
- ㉖ HARD SURFACE TRAILS
- ㉗ MULTIPURPOSE PLAY FIELD
- ㉘ PARKS MAINTENANCE BUILDING
- ㉙ PERVIOUS PAVING
- ㉚ ACCESS RAMP
- ㉛ SOLAR-POWER SHADE STRUCTURE
- ㉜ SHADE STRUCTURE



# SITE FURNISHINGS



**BERNIE SEAT**

TALL SEATING WILL MAKE FOR AN INTERESTING PEOPLE WATCHING PERCH AT THE INTERSECTION OF THE WESTSIDE TRAIL AND LOWER PARK.



**URBAN EDGE JESSIE RAIL**

JESSIE RAIL WILL ACCOMMODATE THE BERNIE SEATS.



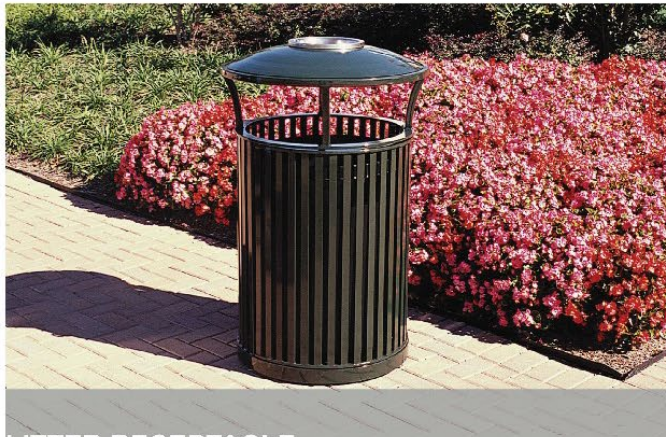
**PICNIC TABLE**

MODERN, DURABLE PICNIC TABLES WILL BE AT THE NORTHERN PARK SECTION ADJACENT TO "THE GREEN."



**RIDE BIKE RACK**

EACH RIDE BIKE RACK EASILY ACCOMMODATES TWO BICYCLES AND A VARIETY OF LOCKS. LOCATED THROUGHOUT THE PARK.



**LITTER RECEPTACLE**

SIMPLE, MODERN, DURABLE TRASH CANS WILL BE PROVIDED AROUND THE PARK. SELECTED LOCATIONS WILL HAVE RECYCLABLE RECEPTACLES AVAILABLE.



**DRINKING FOUNTAIN/BOTTLE FILLER**

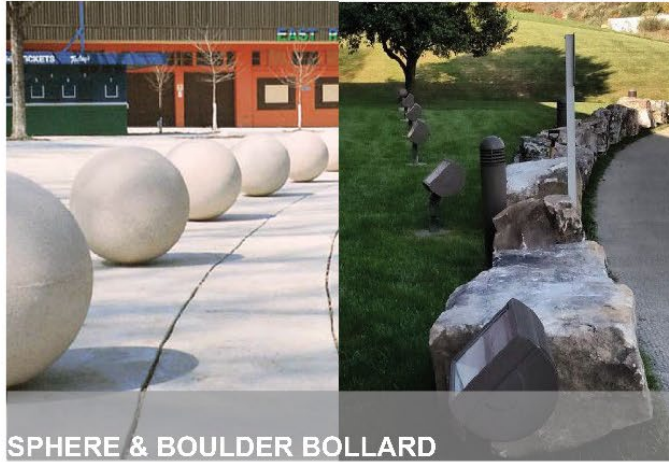
ACCESSIBLE, DURABLE, AND WATER BOTTLE FRIENDLY WATER FOUNTAIN WILL BE AT TWO LOCATIONS WITHIN THE PARK.

# SITE FURNISHINGS



## GRILL

GRILLS WILL BE LOCATED AT THE NORTHERN PARK SECTION ADJACENT TO "THE GREEN" WITH THE PICNIC TABLES. THEY WILL BE AVAILABLE FOR PUBLIC USE.



## SPHERE & BOULDER BOLLARD

SPHERE BOLLARDS IN SELECTED LOCATIONS AND 'LANDSCAPE' BOULDER BOLLARDS PLACED WITHIN LANDSCAPE AREAS TO PREVENT VEHICULAR ACCESS AND PROVIDE PEDESTRIAN SAFETY.



## CREE LIGHT FIXTURE

AESTHETIC, ENERGY EFFICIENT, LOW LIGHTING. LOCATED THROUGHOUT THE PARK ILLUMINATING PATHWAYS AND LARGE COMMON SPACES.



## SKYWARD

A PLAYFUL ART INSTALLATION INCLUDING SHADOW PLAY ELEMENTS THAT ENCOURAGES DYNAMIC PLAY. PROVIDES A CHALLENGING ACTIVE COURSE AND FREE STANDING PLAY AWAY FROM THE MAIN PLAY STRUCTURE. CONSTRUCTED OF DURABLE, RECYCLABLE MATERIALS.



## TYKE TRACK

"DESIGNED TO HELP PRESCHOOL AND SCHOOL AGED CHILDREN TO IMPROVE UPPER BODY STRENGTH AND OVERALL HEALTH AND WELLNESS."



## ARCH SWING

FUN AND ACCESSIBLE WAY TO INCORPORATE A SWINGING MOTION. CAN ACCOMMODATE UP TO 5 CHILDREN. CHILDREN WITH SENSORY DISORDERS CAN LAY AND ENJOY THE CALMING MOTION.



# MATERIALS



## CONCRETE

CONCRETE PAVING WITH A FINE GRAINED FINISH WILL BE USED ALONG TRAILS, WALKWAYS, AND SOME PLAZA AREAS WITHIN THE PARK. A 'CARBONCURE' PROCESS THAT RECLAIMS LOST CO2 EMISSIONS AND ENCAPSULATED WITHIN THE CONCRETE WILL BE UTILIZED.



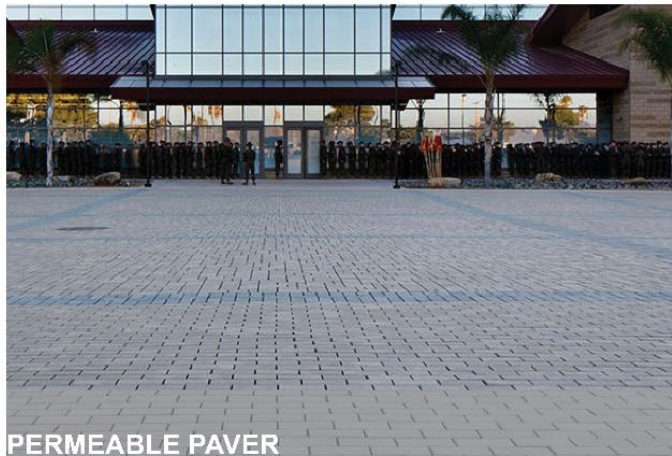
## DECORATIVE CONCRETE BAND

DECORATIVE CONCRETE BANDS WILL BE USED SELECTIVELY TO ENHANCE THE VISUAL QUALITY OF THE WALKING SURFACES. BANDS WILL BE TREATED WITH A SLIGHTLY DIFFERENT TEXTURE THAN SURROUNDING AREAS.



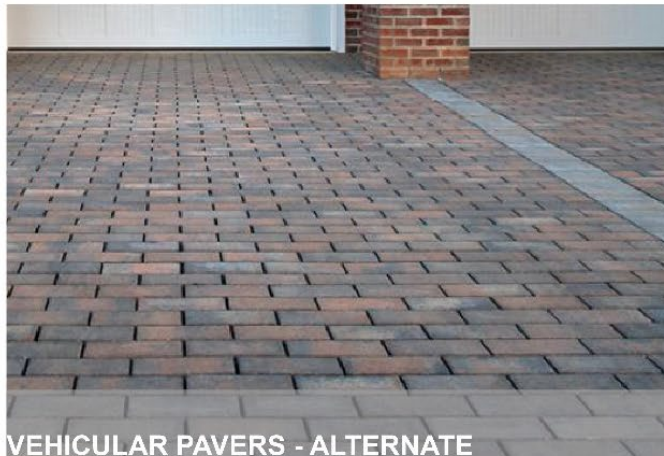
## RECYCLED CONCRETE PAVEMENT

PERMEABLE PAVERS CONSISTING OF RECYCLED CONCRETE RECLAIMED FROM ON-SITE DEMOLITION WILL BE SITUATED IN THE MIDDLE SECTION OF THE PARK AND WILL ENHANCE WATER QUALITY AND STORMWATER INFILTRATION.



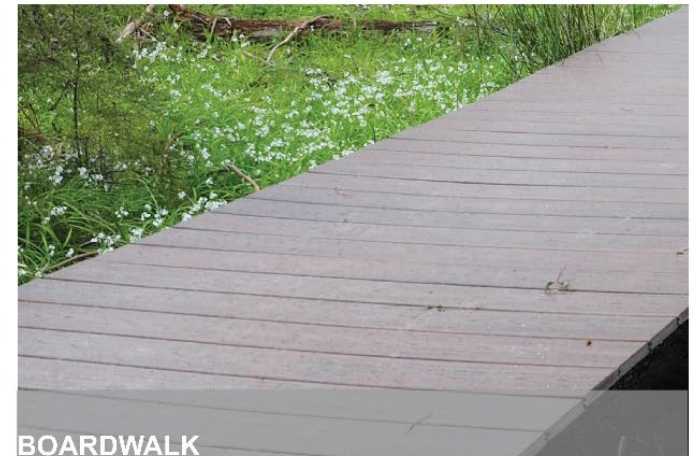
## PERMEABLE PAVER

PERMEABLE CONCRETE PAVING WILL BE USED ALONG PLAZA AND PEDESTRIAN SPACES. IT NOT ONLY ADDS A NICE TEXTURE, THE SURFACING ALLOWS FOR INCREASED WATER QUALITY AND STORMWATER INFILTRATION.



## VEHICULAR PAVERS - ALTERNATE

AN ALTERNATE THAT MAY BE INCLUDED ARE CONCRETE PAVERS WITHIN THE CORNER OF GREENWICH AND ALLATOONA. THIS WILL HELP FORM A MAIN SITE ENTRANCE AND GATEWAY TO THE WESTSIDE TRAIL.



## BOARDWALK

BOARDWALK DECKING WILL CONSIST OF COMPOSITE BOARDS WHICH ARE A DURABLE MATERIAL MADE OF RECYCLED PLASTIC FIBERS.

# MATERIALS



## FLEXIPAVE -TREE SURROUNDS

SEVERAL PLAZA TREE PLANTINGS WILL BE SURFACED WITH FLEXIPAVE. THE SURFACING IS A RECYCLED FINE AGGREGATE THAT PROVIDES A FLAT WALKING SPACE AROUND THE TREE ROOT ZONES BUT ALSO ALLOWS AIR AND IS PERMEABLE TO WATER.



## FLEXIBLE UNIT PAVING SURFACE

THE PLAYGROUND WILL BE SURFACED WITH A SOFTER MEDIUM. THESE FLEXIBLE TILES ARE MADE FROM RECYCLED PLASTIC AND ARE MADE IN NEARBY CALHOUN, GEORGIA BY RUBBER DESIGN.



## GRANITE VENEER

THE SITE'S ROLLING TOPOGRAPHY NECESSITATES RETAINING WALLS. THE WALLS WILL BE FACED WITH A TRADITIONAL ATLANTA STYLE GRANITE VENEER WHICH IS BOTH ATTRACTIVE AND GRAFFITI RESISTANT.



## LILY BACKED BENCH

DURABLE MODERN BENCHES WITH A RECYCLED COMPONENT WILL BE PLACED AROUND THE PARK.



## LILY BACKLESS BENCH

BACKLESS OPTIONS OF LILY BENCH WILL ALSO BE PLACED IN APPROPRIATE LOCATIONS.

Questions/Comments?

