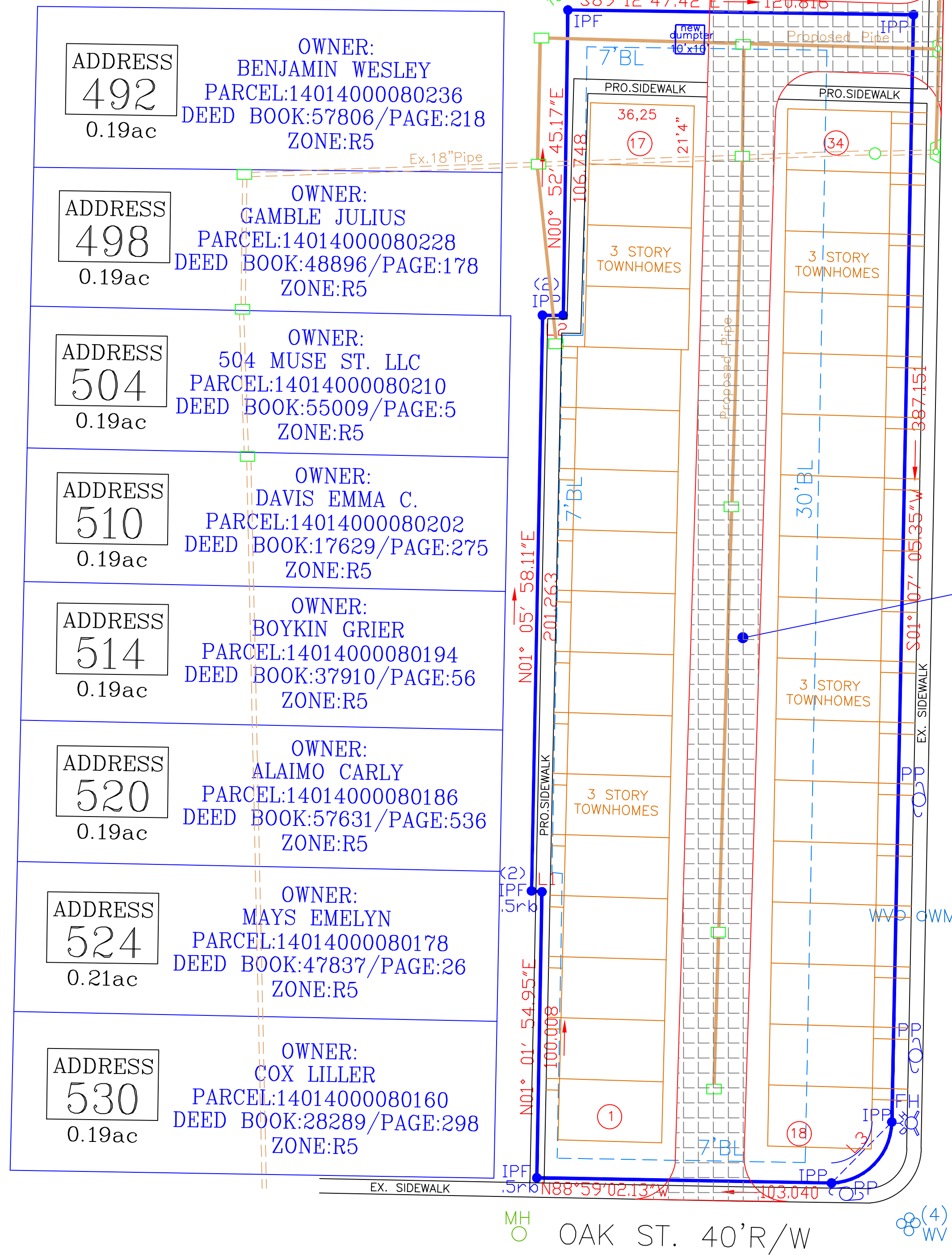
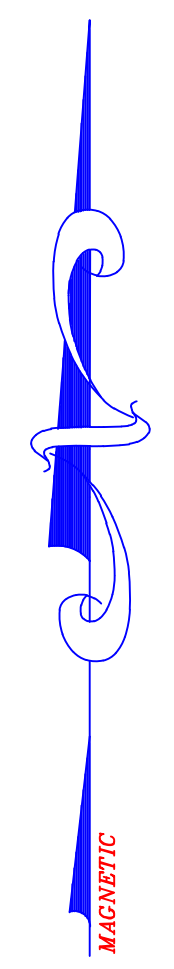
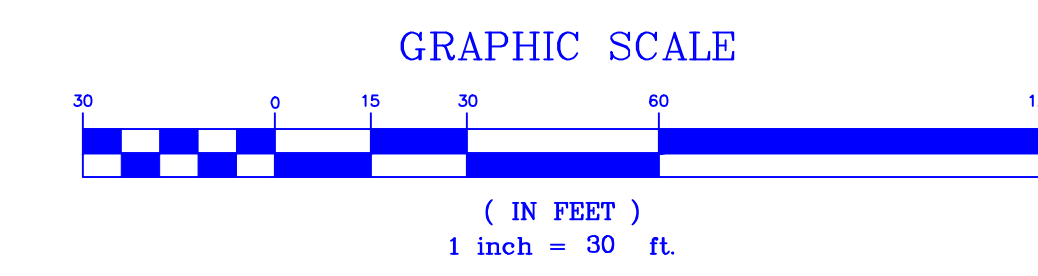


VICINITY MAP



LEGEND

Existing Contour	---990---	Radius	R
Proposed Contour	---990---	Chord Bearing	CB
Exist. Spot Elev.	992.0	Chord	C
Proposed Spot Elev.	992.0	Service Pole	SP
Sanitary Sewer	SS	Lamp Pole	LPL
Fire Hydrant	⊗	Overhead Utility Line	DHUL
Silt Fence	X-X	Man Hole	MH
Water Line	W	Catch Basin	CB
Traffic Flow	→	Junction Box	JB
Power Pole	PP	Drop Inlet	DI
Gas Line	G	Headwall	HW
Iron Pin Set	IPS	Corrugated Metal Pipe	CMP
Iron Pin Found	IPF	Reinforced Concrete	RCP
Concrete Monument Found	CMF	Cross Drain	CD
Monument	MON	Sewer Easement	SE
Nail & Cap	N&C	Drainage Easement	DE
Fence Corner	FC	Water Valve	WV
Fence	-x-x-	Gas Meter	GM
Open Top Pin	DTP	Gas Valve	GV
Crimp Top Pin	CT	Gas Meter	GM
Reinforcing Bar	Re-bar	Arc	A
Centerline	C	Underground Electricity	UE
Right-of-Way	R/W	Underground Telephone	UT
		To Be Removed	TBR



707 Whitlock Ave., S.W. Suite H-12, Marietta, Georgia 30064
ACME AMERICAN, L.L.C.
Architects, Construction Managers, Engineers
voice (770) 425-6890 - fax (770) 425-5777

PROJECT# 20212203
title: **Proposed Site Plan for Cornerstone the belline**
project: 525 Langhorn St. Atlanta Ga. 30310
Fulton County L.L.140, 14th Dist.

seal
seal: 3-22-21



revisions:
date: 3-22-21
dwg. by: AWT
chkd. by: JWP

sheet:
C-1a

ENGINEER/SURVEYOR:
Acme American Llc tsf776
J. WAYNE PROCTOR
319 ATLANTA STREET, SE
MARIETTA, GA 30060
(770)425-6890

UTILITIES PROTECTION CENTER
Call FREE
IN METRO ATLANTA
325-5000
THROUGHOUT GEORGIA
1-800-282-7411
THREE WORKING DAYS BEFORE YOU DIG

L1
N85° 04' 33.07"W
3.648

L2
N90° 00' 00.00"E
7.207

L3
S44° 39' 09.68"W
30.021
L=32.799,
R=22.709

EQUIPMENT USED FOR MEASUREMENTS:
ANGULAR - TOPCON GTS-300 TOTAL STATION
LINEAR - EDM

THE FIELD DATA UPON WHICH THIS PLAT IS BASED HAS A CLOSURE PRECISION OF ONE FOOT IN 50896 FEET. AND AN ANGULAR ERROR OF 05 SECONDS PER ANGLE POINT. THIS PLAT SUBJECT TO ALL EASEMENTS AND RIGHTS OF WAY PUBLIC AND PRIVATE. THIS PLAT HAS BEEN CALCULATED FOR CLOSURE AND IS FOUND ACCURATE WITHIN ONE FOOT IN 727085 FEET. IN MY OPINION THIS PLAT OR SURVEY IS A CORRECT REPRESENTATION OF THE LAND PLATTED AND HAS BEEN PREPARED IN CONFORMITY WITH THE MINIMUM TECHNICAL STANDARDS FOR PROPERTY SURVEYS IN GEORGIA AS SET FORTH IN CHAPTER 180-7 OF THE RULES OF THE GEORGIA

set forth in the Georgia Plat Act O.C.G.A. 15-6-67. Authority O.C.G.A. Secs 15-6-67, 43-15-4, 43-15-6, 43-15-19, 43-15-22. BEARINGS SHOWN HEREON ARE BASED ON MAGNETIC OBSERVATIONS. Field work completed 11-6-20 ALL PINS PLACED IPP 5" REBAR